



PPP

PUBLIC-PRIVATE PARTNERSHIP

Wastewater treatment for final disposal or reuse, province of Chincha, department of Ica, Peru.



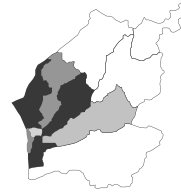
WASTEWATER TREATMENT FOR FINAL DISPOSAL AND/OR REUSE, PROVINCE OF CHINCHA, ICA, PERU.

Description

It includes the design, financing, construction, operation and maintenance of the main collection networks and the infrastructure for the treatment of wastewater in Chincha.



Area of influence



The project's area of influence is the districts of Chincha Alta, Chincha Baja, Grocio Prado, Pueblo Nuevo, Alto Larán, Sunampe and Tambo de Mora in the province of Chincha.

Grantor



Ministry of Housing, Construction and Sanitation (MVCS)

Contracting modality



Concession contract

Classification



Co-financed Unsolicited Proposal

Reuse potential



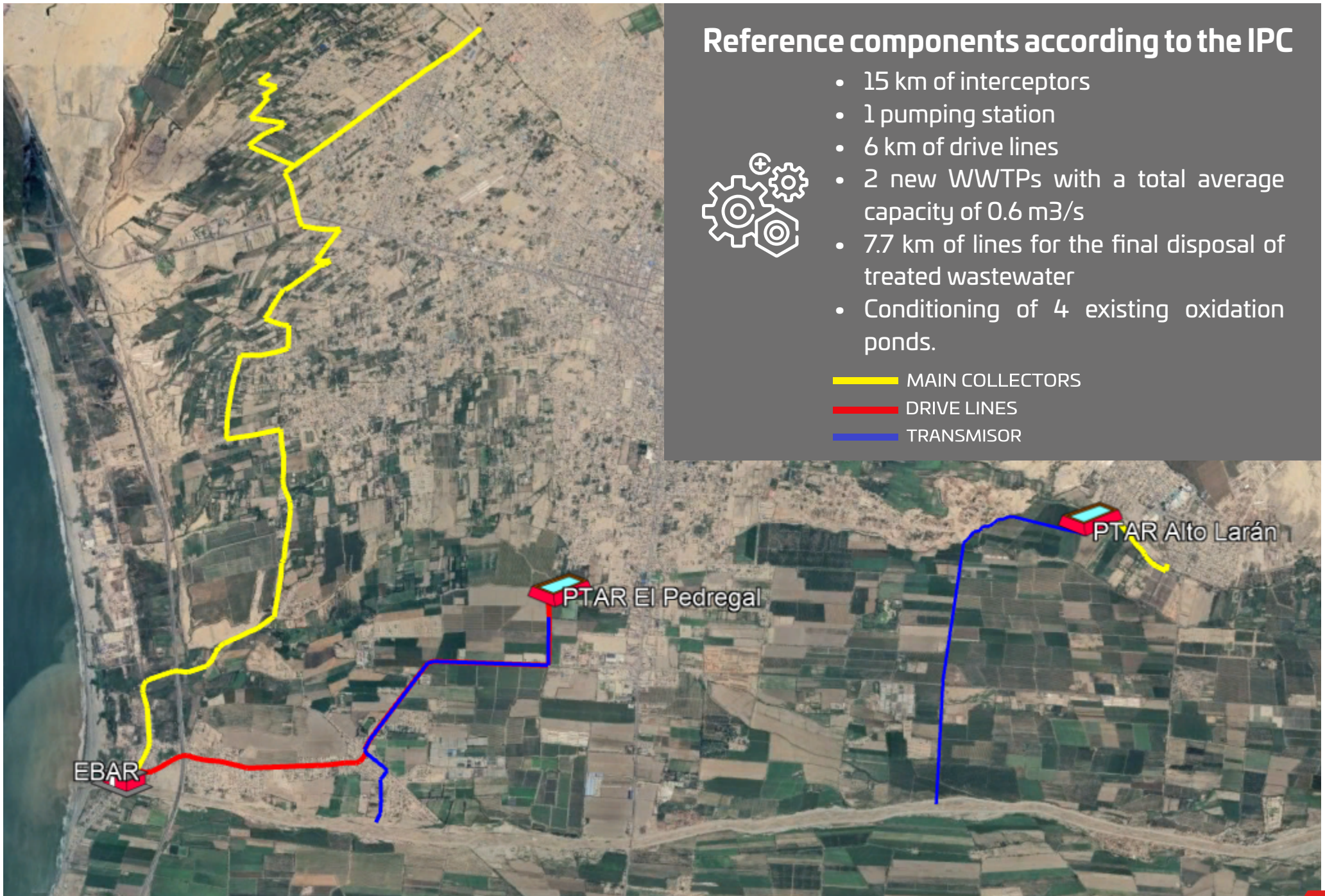
The contract will require compliance with service levels that will allow obtaining treated wastewater with reuse potential for irrigation.

Reference components according to the IPC



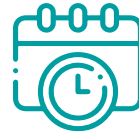
- 15 km of interceptors
- 1 pumping station
- 6 km of drive lines
- 2 new WWTPs with a total average capacity of 0.6 m³/s
- 7.7 km of lines for the final disposal of treated wastewater
- Conditioning of 4 existing oxidation ponds.

- MAIN COLLECTORS
- DRIVE LINES
- TRANSMISOR





Concession term



The term of the concession is 24 years.

04 years for the design, financing, construction and start-up of the works.

20 years of operation and maintenance

Subscription of the Contract

Start of Operation

End of the Concession Contract



4 years

Period of Design, Financing, Construction and start-up

20 years

Period of Operation and Maintenance

Reference amount of investment



US\$ 96.5 million (excluding VAT)



Payment mechanism

The Peruvian State, through the MVCS, will assume 100 % of the co-financing for the investment, which will be reimbursed during the operational phase of the project as follows:

- 1. Payment for Works (PPO):** Payment to the Concessionaire for the adaptation of the Non-Selected WWTPs.
- 2. Availability Payment for Investment (PPDI):** Compensates the investment cost over the first 15 years from the start of operations.



The payment for operation and maintenance (PPDMO) will be compensated through temporary co-financing by the MVCS and the tariff assigned to the service provider SEMAPACH by the regulatory body for the project, and will consist of:

- Availability Payment for Variable Maintenance and Operation (PPDMOV), remunerates the costs associated with the treatment of DBO5, based on the kilograms of DBO5 treated at the WWTP.
- Availability Payment for Fixed Maintenance and Operation (PPDMOF), remunerates fixed operating costs.



Expected beneficiary population



345,000 inhabitants of the province of Chincha

Environmental impact



- Decontamination of water bodies.
- Reduction of the incidence of diseases related to inadequately treated wastewater.
- Improved quality of life for the inhabitants of Chincha.

Positive development impacts



- Local economic development
- Modernization of wastewater treatment infrastructure.
- Potential for reusing treated water for irrigation, contributing to the circular economy.



PRO
INVERSIÓN

PRO 
INVERSIÓN

Av. Enrique Canaval Moreyra 150
Piso 9, San Isidro
Lima 27 / PERÚ
T: +51 1 200 1200 Anx 1201
F: +51 1 221 2931

www.investinperu.pe