

WWW.INVESTINPERU.PE

PUBLIC-PRIVATE
PARTNERSHIP

TWO NEW ESSALUD HOSPITALS: PIURA AND CHIMBOTE



PERÚ

Ministerio
de Economía y Finanzas



ProlInversión

Private Investment Promotion Agency - Peru

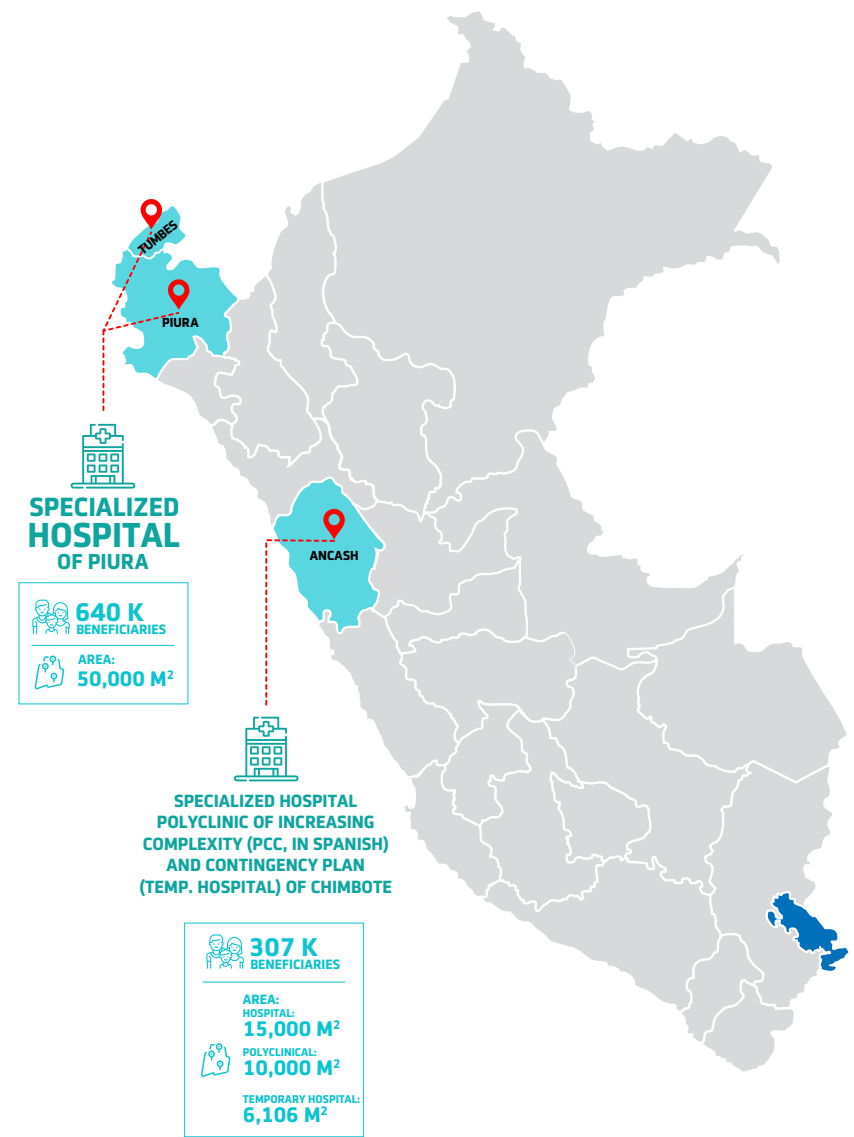


BICENTENARIO
PERÚ 2021

The “**TWO NEW (ESSALUD) HOSPITALS: PIURA AND CHIMBOTE**” have been designed under the Public-Private Partnership (PPP) modality.

The following goals will be achieved from them:

- Gap reduction of the specialized hospital infrastructure.
- Gap reduction in quantity and quality of the specialized health services.
- Contribution to the reduction of the morbidity and mortality and to the increase of a life expectancy for the ensured population within the influence area.
- Decrease the health expenses of the families within the influence area, thus they will not go to other health providers in or outside the influence area.





Specialized Hospital and Polyclinic of Increasing Complexity (PCC) and Contingency Plan (Temporary Hospital) of Chimbote



Project Name

Creation of health specialized services for Chimbote Specialized Hospital in the Ancash Health Network of EsSalud, district of Nuevo Chimbote, province of Santa, department of Ancash.

Classification: Specialized Hospital



Scope

The project includes the design, financing, construction, and operation of a temporary hospital facility, a specialized hospital, and a higher complexity polyclinic (PCC) in the city of Nuevo Chimbote. As well as the operation of the specialized hospital and the PCC.

It also considers the procurement and replacement of equipment, the maintenance of the hospital infrastructure, as well as the supply of general and support services.

It does not include the supply of medical services. They will continue in charge of the State by ESSALUD.



Influence Area

Department of Ancash



Grantor Entity

Peruvian Social Health Insurance - ESSALUD



Contract Modality

Concession



Classification

Co-financed state initiative



Project Feasibility

The Project with SNIP Code No. 218436 was declared viable by ESSALUD on May 31, 2017



Value for money

According to the quantity methodological tool, the MEF's eligibility criteria were applied. They verified that the Project generates value for money and, therefore, meets the necessary conditions to be developed under the PPP modality.



Components

Main works:
Design and construction of a seismic-resistant hospital infrastructure.



Approximate Area to build:

- Hospital: 48,250.16 m²
- PCC: 7,454.16 m²
- Temporary Hospital: 1,581.00 m²

Number of hospital beds: 161

Main services:

Management of hospital services under the gray/green coat modality

• **Gray Coat Services:**

- Clothing and Laundry Management
- Food
- Safety and Security
- Integral Management and Solid Waste Management
- Sterilization
- Housekeeping and Vector Management
- Maintenance and Operation of the building, facilities, electromechanical equipment, and furniture related to the infrastructure
- Administration, Procurement, Maintenance and Availability of the equipment
- Information and Communication Technologies (ICTs) and Supply and Availability of Technological Infrastructure (TI).
- Logistics of inputs, strategic goods, drugs, and non-strategic inputs

• **Green Coat Services:**

- Hemodialysis
- Clinical Pathology: Laboratory
- Imaging

Also considers the procurement and replacement of clinical and non-clinical high-tech equipment, including CAT and MRI scans.



Components



Concession Period

20 years

This period includes:

- 3 years of pre-operational stage
- 17 years of operation and maintenance



Payment Mechanism

Availability Payment (PPD) subject to deductions for the non-compliance of service levels established for them.

The PPD is composed by a general compensation named Monthly Financial Compensation for Services (CEMS) which is divided into compensation for investments (CEAI), fixed component of the compensation for services (CEASF), variable component, based in volume, of the compensation for services (CEASV).

Additionally, it has been considered a compensation for the replacement of equipment (CRE).

The deductions for the non-compliance of service levels (DMCES, in Spanish) will be taken from the compensations of fixed and variable services.

ESSALUD will assume the 100% of the payment obligations resulting from the Project through the Administration, Payments and Guarantees Matrix Trust.



ESSALUD provides the project with freely available lands - at the signing of the contract - for the execution of works. The lands already have legal-physical sanitation.

Area

- Hospital: 15,241.21 m²
- PCC: 10,000 m²
- Temporary Hospital: 6,106 m²

Location

- Department of Ancash, Province of Santa, District of Nuevo Chimbote, Location Code 021809

Site

- Hospital: Sub Lote 1 & 2, Mz. B, Section 74-75 Urb. Buenos Aires
- PCC: Calle 56, S/N on a corner with Calle 78
- Temporary Hospital: Mz. T 5, Lote 5 Urb. Bellamary department of Ancash.



Lands



Beneficiary Population

307 thousand of beneficiaries



Investment Reference Amount

431 million soles (CAPEX – not including VAT)



Specialized Hospital of Piura



Project Name

Creation of health specialized services for the Specialized Hospital in the Piura Health Network of ESSALUD, district of Veintiséis de Octubre, province of Piura, department of Piura.

Classification: Specialized Hospital



Scope

It also considers the procurement and replacement of equipment, the maintenance of the hospital infrastructure, as well as the supply of general and support services.

It does not include the supply of medical services. They will continue in charge of the State by ESSALUD.



Influence Area

Departments of Piura and Tumbes



Grantor Entity

Peruvian Social Health Insurance - ESSALUD



Contract Modality

Concession



Classification

Co-financed state initiative



Project Feasibility

The Project with SNIP Code No. 220048 was declared viable by ESSALUD on May 29, 2017



Value for money

According to the quantity methodological tool, the MEF's eligibility criteria were applied. They verified that the Project generates value for money and, therefore, meets the necessary conditions to be developed under the PPP modality.



Components

Main works:

Design and construction of a seismic-resistant hospital infrastructure.



Components

Approximate Area to build:

- Hospital: 66,297 m²

Number of hospital beds: 324

Main services:

Management of hospital services under the gray/green coat modality

- **Gray Coat Services:**

- Clothing and Laundry Management
- Food
- Safety and Security
- Integral Management and Solid Waste Management
- Sterilization
- Housekeeping and Vector Management
- Maintenance and Operation of the building, facilities, electromechanical equipment, and furniture related to the infrastructure
- Administration, Procurement, Maintenance and Availability of the equipment
- Information and Communication Technologies (ICTs) and Supply and Availability of Technological Infrastructure (TI).
- Logistics of inputs, strategic goods, drugs, and non-strategic inputs

- **Green Coat Services:**

- Hemodialysis
- Clinical Pathology: Laboratory
- Imaging

Also, considers the procurement and replacement of clinical and non-clinical high-tech equipment, including CAT and MRI scans.



Concession Period

20 years

This period includes:

- 3 years of pre-operational stage
- 17 years of operation and maintenance



Payment Mechanism

Availability Payment (AP) subject to deductions for the non-compliance of service levels established for them.

The AP is composed by a general compensation named Monthly Financial Compensation for Services (CEMS) which is divided into compensation for investments (CEAI), fixed component of the compensation for services (CEASF), variable component, based in volume, of the compensation for services (CEASV).

Additionally, it has been considered a compensation for the replacement of equipment (CRE).

The deductions for the non-compliance of service levels (DMCES) will be taken from the compensations of fixed and variable services.

ESSALUD will assume the 100% of the payment obligations resulting from the Project through the Administration, Payments and Guarantees Matrix Trust.



Lands

ESSALUD provides the project with freely available lands - at the signing of the contract - for the execution of works. Their legal-physical sanitation is under execution.

Area

- 50,000 m²

Location

- Department of Piura, Province of Piura, District of Veintiséis de octubre

Site

- From the Sub Lote 02, Mz. D, Plot J, Industrial Area adjacent to the Extension of Sanchez Cerro Ave., Northwest Section.



Beneficiary Population

640 thousand beneficiaries



Investment Reference Amount

567 million soles (CAPEX – not including VAT)



ProInversión

Agencia de Promoción de la Inversión Privada - Perú

Follow us:



PROINVERSIÓN Perú

NANCY ZEDANO

nzedano@proinversion.gob.pe

Visit the project web page:

INFO.PROINVERSION.GOB.PE/ESSALUD-INGLES/

WWW.INVESTINPERU.PE