

WWW.INVESTINPERU.PE

PUBLIC-PRIVATE  
PARTNERSHIP

# TWO NEW ESSALUD HOSPITALS: PIURA AND CHIMBOTE



PERÚ

Ministerio  
de Economía y Finanzas



**ProlInversión**

Private Investment Promotion Agency - Peru

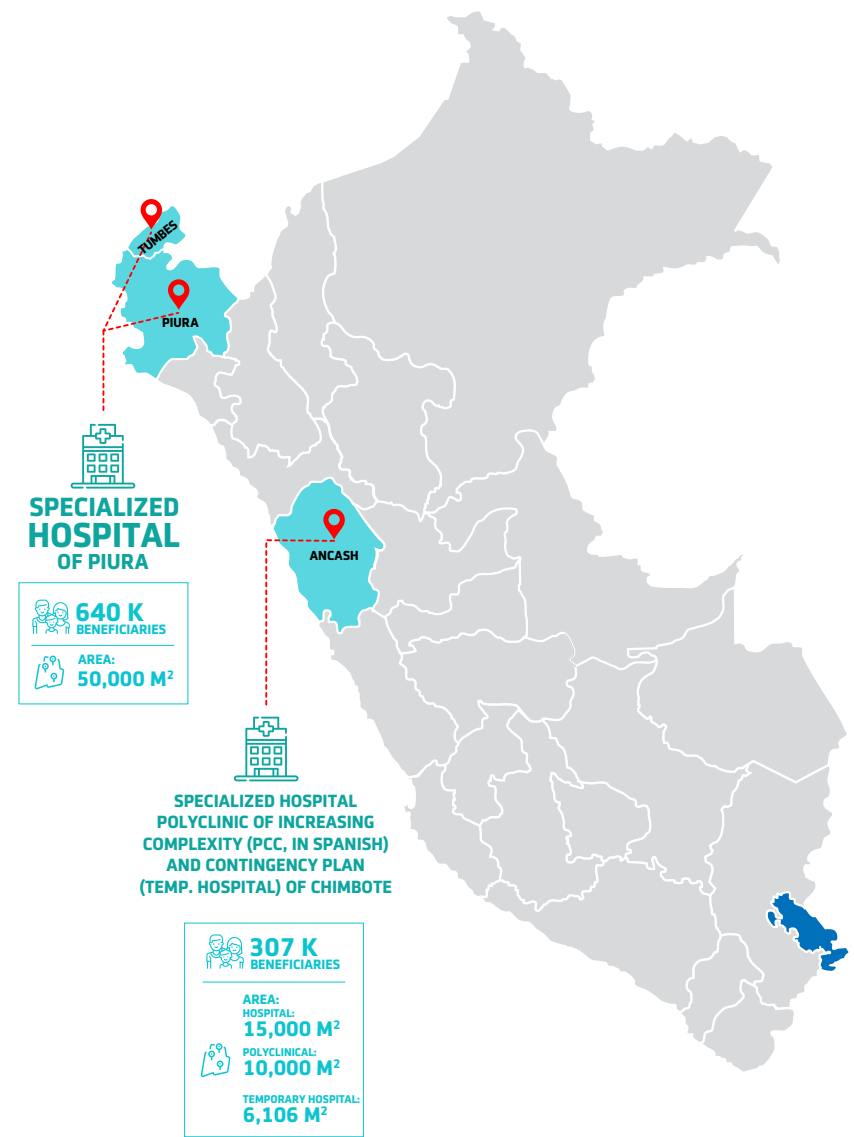


BICENTENARIO  
PERÚ 2021

The **“TWO NEW (ESSALUD) HOSPITALS: PIURA AND CHIMBOTE”** have been designed under the Public-Private Partnership (PPP) modality.

The following goals will be achieved from them:

- Gap reduction of the specialized hospital infrastructure.
- Gap reduction in quantity and quality of the specialized health services.
- Contribution to the reduction of the morbidity and mortality and to the increase of a life expectancy for the ensured population within the influence area.
- Decrease the health expenses of the families within the influence area, thus they will not go to other health providers in or outside the influence area.





# Specialized Hospital and Polyclinic of Increasing Complexity (PCC) and Contingency Plan (Temporary Hospital) of Chimbote



## Project Name

Creation of health specialized services for Chimbote Specialized Hospital in the Ancash Health Network of EsSalud, district of Nuevo Chimbote, province of Santa, department of Ancash.

**Classification:** Specialized Hospital



## Scope

The project includes the design, funding, construction, and operation of a temporary hospital, a specialized hospital, and a polyclinic of increasing complexity in the city of Chimbote.

It also considers the procurement and replacement of equipment, the maintenance of the hospital infrastructure, as well as the supply of general and support services.

It does not include the supply of medical services. They will continue in charge of the State by ESSALUD.



## Influence Area

Department of Ancash



### Grantor Entity

Peruvian Social Health Insurance - ESSALUD



### Contract Modality

Concession



### Classification

Co-financed state initiative



### Project Feasibility

The Project with SNIP Code No. 218436 was declared viable by ESSALUD on May 31, 2017



### Value for money

According to the quantity methodological tool, the MEF's eligibility criteria were applied. They verified that the Project generates value for money and, therefore, meets the necessary conditions to be developed under the PPP modality.



### Components

#### Main works:

Design and construction of a seismic-resistant hospital infrastructure.



Approximate Area to build:

- Hospital: 48,250.16 m<sup>2</sup>
- PCC: 7,454.16 m<sup>2</sup>
- Temporary Hospital: 1,581.00 m<sup>2</sup>

Number of hospital beds: 161

**Main services:**

Management of hospital services under the gray/green coat modality



**Components**

• **Gray Coat Services:**

- Clothing and Laundry Management
- Food
- Safety and Security
- Integral Management and Solid Waste Management
- Sterilization
- Housekeeping and Vector Management
- Maintenance and Operation of the building, facilities, electromechanical equipment, and furniture related to the infrastructure
- Administration, Procurement, Maintenance and Availability of the equipment
- Information and Communication Technologies (ICTs) and Supply and Availability of Technological Infrastructure (TI).
- Logistics of inputs, strategic goods, drugs, and non-strategic inputs

• **Green Coat Services:**

- Hemodialysis
- Clinical Pathology: Laboratory
- Imaging

Also considers the procurement and replacement of clinical and non-clinical high-tech equipment, including CAT and MRI scans.



## Concession Period

### 20 years

This period includes:

- 3 years of pre-operational stage
- 17 years of operation and maintenance



## Payment Mechanism

Availability Payment (PPD) subject to deductions for the non-compliance of service levels established for them.

The PPD is composed by a general compensation named Monthly Financial Compensation for Services (CEMS) which is divided into compensation for investments (CEAI), fixed component of the compensation for services (CEASF), variable component, based in volume, of the compensation for services (CEASV).

Additionally, it has been considered a compensation for the replacement of equipment (CRE).

The deductions for the non-compliance of service levels (DMCES, in Spanish) will be taken from the compensations of fixed and variable services.

ESSALUD will assume the 100% of the payment obligations resulting from the Project through the Administration, Payments and Guarantees Matrix Trust.



ESSALUD provides the project with freely available lands - at the signing of the contract - for the execution of works. The lands already have legal-physical sanitation.



## Lands

### Area

- Hospital: 15,241.21 m<sup>2</sup>
- PCC: 10,000 m<sup>2</sup>
- Temporary Hospital: 6,106 m<sup>2</sup>

### Location

- Department of Ancash, Province of Santa, District of Nuevo Chimbote, Location Code 021809

### Site

- Hospital: Sub Lote 1 & 2, Mz. B, Section 74-75 Urb. Buenos Aires
- PCC: Calle 56, S/N on a corner with Calle 78
- Temporary Hospital: Mz. T 5, Lote 5 Urb. Bellamary department of Ancash.



## Beneficiary Population

307 thousand of beneficiaries



## Investment Reference Amount

397 million soles (CAPEX – not including VAT)



# Specialized Hospital of Piura



## Project Name

Creation of health specialized services for the Specialized Hospital in the Piura Health Network of ESSALUD, district of Veintiséis de Octubre, province of Piura, department of Piura.

**Classification:** Specialized Hospital



## Scope

It also considers the procurement and replacement of equipment, the maintenance of the hospital infrastructure, as well as the supply of general and support services.

It does not include the supply of medical services. They will continue in charge of the State by ESSALUD.



## Influence Area

Departments of Piura and Tumbes



## Grantor Entity

Peruvian Social Health Insurance - ESSALUD



## Contract Modality

Concession



## Classification

Co-financed state initiative



## Project Feasibility

The Project with SNIP Code No. 220048 was declared viable by ESSALUD on May 29, 2017



## Value for money

According to the quantity methodological tool, the MEF's eligibility criteria were applied. They verified that the Project generates value for money and, therefore, meets the necessary conditions to be developed under the PPP modality.



## Components

### Main works:

Design and construction of a seismic-resistant hospital infrastructure.



## Components

Approximate Area to build:

- Hospital: 66,297 m<sup>2</sup>

Number of hospital beds: 342

### Main services:

Management of hospital services under the gray/green coat modality

- **Gray Coat Services:**

- Clothing and Laundry Management
- Food
- Safety and Security
- Integral Management and Solid Waste Management
- Sterilization
- Housekeeping and Vector Management
- Maintenance and Operation of the building, facilities, electromechanical equipment, and furniture related to the infrastructure
- Administration, Procurement, Maintenance and Availability of the equipment
- Information and Communication Technologies (ICTs) and Supply and Availability of Technological Infrastructure (TI).
- Logistics of inputs, strategic goods, drugs, and non-strategic inputs

- **Green Coat Services:**

- Hemodialysis
- Clinical Pathology: Laboratory
- Imaging

Also, considers the procurement and replacement of clinical and non-clinical high-tech equipment, including CAT and MRI scans.



## Concession Period

### 20 years

This period includes:

- 3 years of pre-operational stage
- 17 years of operation and maintenance



## Payment Mechanism

Availability Payment (AP) subject to deductions for the non-compliance of service levels established for them.

The AP is composed by a general compensation named Monthly Financial Compensation for Services (CEMS) which is divided into compensation for investments (CEAI), fixed component of the compensation for services (CEASF), variable component, based in volume, of the compensation for services (CEASV).

Additionally, it has been considered a compensation for the replacement of equipment (CRE).

The deductions for the non-compliance of service levels (DMCES) will be taken from the compensations of fixed and variable services.

ESSALUD will assume the 100% of the payment obligations resulting from the Project through the Administration, Payments and Guarantees Matrix Trust.



## Lands

ESSALUD provides the project with freely available lands - at the signing of the contract - for the execution of works. Their legal-physical sanitation is under execution.

### Area

- 50,000 m<sup>2</sup>

### Location

- Department of Piura, Province of Piura, District of Veintiséis de octubre

### Site

- From the Sub Lote 02, Mz. D, Plot J, Industrial Area adjacent to the Extension of Sanchez Cerro Ave., Northwest Section.



## Beneficiary Population

640 thousand beneficiaries



## Investment Reference Amount

521 million soles (CAPEX – not including VAT)



# ProInversión

Agencia de Promoción de la Inversión Privada - Perú

Follow us:



PROINVERSIÓN Perú

**NANCY ZEDANO**

[nzedano@proinversion.gob.pe](mailto:nzedano@proinversion.gob.pe)

Visit the project web page:

**[INFO.PROINVERSION.GOB.PE/ESSALUD-INGLES/](http://INFO.PROINVERSION.GOB.PE/ESSALUD-INGLES/)**

[WWW.INVESTINPERU.PE](http://WWW.INVESTINPERU.PE)